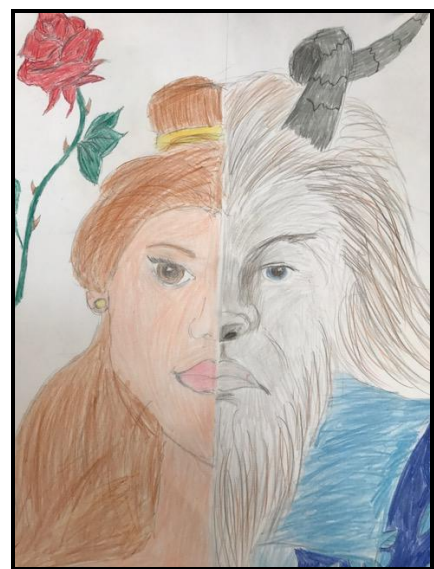




**Weekly Newsletter**

**Tuesday 8<sup>th</sup> May 2018**



### **Head's Message**

I am very pleased to say that our Parents Friend Association (PFA) is very active at the moment and full of great fundraising ideas for the school. St Mary's staff are very keen to work closely with the PFA to support their voluntary work and are looking forward to being a part of the summer's events. Central to the summer term calendar is the summer fete which will take place on Saturday 16<sup>th</sup> June. The PFA have lots of great ideas for this annual event that will help to make it a very special one, and, by the way, those looking forward to sponging a teacher will not be disappointed!

Also in the summer term, the PFA's annual camping trip will take place on 29<sup>th</sup> and 30<sup>th</sup> June. This fantastic community event sends families on annual expeditions to attics and garages in search of long-lost tents and pegs; long may this continue! For those with the camping bug, there is a box at the school office to post your camping trip form and pay any monies due.

The PFA have also been creative in identifying possible future projects at the school to which they could contribute funds. Senior leaders are working with them to identify high-impact projects and we expect to consult the children too via School Council to get a sense of what they would like to see developed at the school.

The PFA is only as strong as its members make it of course and with

this in mind I urge you to offer your services in whatever shape or form so that it continues to go from strength to strength. If you would like to offer your support please do so via this contact address: [stmarys17pfa@gmail.com](mailto:stmarys17pfa@gmail.com) Your support will be greatly appreciated.

On a different note, I'd like to let parents know that with better weather in these summer term months, we will have one or two assemblies on the football pitch, dry weather permitting. With our new mic and PA system the children will hear very clearly and the children are used to sitting on the surface there (as they do so each week in PE lessons when taking instruction from the sports coach). Friday assemblies will remain inside, but the first al fresco assembly is likely to be with Rev Vanessa, who is very keen to explore the great outdoors!

Finally, elsewhere in this newsletter, you will find a reminder of the school uniform expectations at St Mary's. There have been no changes to uniform expectations this year, but it will serve as a reminder of what is expected for the remainder of the summer term. Please make sure all uniform is clearly labelled with your child's name – especially sweatshirts and caridigans which get taken off and discarded in this

hot weather and are then difficult to reunite with their owner if they are unnamed.

*Mr O'Brien, Head Teacher*

### **Class Corner**

With the arrival of the month of May, our focus has been very much on consolidating our knowledge in preparation for our SATs which are just a week away now. Everyone in 6 Wilson, and across the whole of Year 6, has been remarkably focussed and we are sure their hard work will pay off. Looking beyond SATs week, we have loads of exciting and interesting lessons and events planned, including rehearsals for a musical theatre performance – much to look forward to.

*Mrs Zaman and 6 Wilson*

### **Hackney Half-Marathon**

On May 20<sup>th</sup> Mr O'Driscoll, Mr Giez, Ms Kreft, Ms Myers and Miss John will be running the Hackney Half-marathon to raise money for Crohn's and Colitis UK. We would greatly appreciate any donations you could make for this good cause and to encourage them to finish the race!

<https://www.justgiving.com/fundraising/fedrunners2018>

Thank you for your support.

### Stars of the Week

Well done to our Stars of the Week who were presented with their award on Friday in assembly:

1A	Angeline & Emmanuel
1M	Evie & Loryah
1W	Kasie & Riley
2A	Annabel & Noah
2M	Sonny M & Robert
2W	Rosa & Dean
3A	Jenson & Edie H
3M	Lily & Herbie
3W	Whole Class
4A	Harry & Susan
4M	Xav & Ameen
4W	Samantha & Ellis
5A	Josiah & Eva
5M	Szymon & Tanya
5W	Philiesha & Delroy
6A	Joy & Hayden
6M	Ioana & Luan
6W	Mabel & Amelie

Huge congratulations to you all – you had a great week.



### Assemblies

Parents are welcome to join us for our Monday and Friday assemblies.

Monday assemblies continue to be split by Key Stages, while Fridays remain split by Houses. This term **Wilson House** are in the School Hall, and **Attlee and Morris** houses in the Gym.

### Further PFA News

As Mr O'Brien described above, our wonderful PFA are working hard behind the scenes to prepare for our forthcoming Summer Fair on 16<sup>th</sup> June and you should have received a fairly comprehensive e-mail from them last Friday with details of forthcoming events, including an invitation to the AGM on 22<sup>nd</sup> May, an application form for our family camping trip and information about our annual bike ride. None of these events work without your help so if there is anything you can do, please contact a member of the PFA in person or using the address quoted on the first page of this newsletter. Thank you.

### Attendance and Punctuality

Punctuality varies at St Marys – one good week can be followed by one not so good. There was a big dip again last week, with 55 pupils late across the week. It really does make a difference to your child if they are late – they miss the start of day instructions and it is sometimes hard to get the day off to a positive start.

We would just like to reiterate again, across a school year,

5 minutes late each day = 3 days lost!

10 minutes late = 6 days lost!

15 minutes late = 9 days lost!

20 minutes late = 12 days lost!, and

30 minutes late = 18 days lost!

We know that every minute counts so please try to arrive on time every day.

Well done to all the superstars in 1W who have the best attendance for the second week running, improving this week from last weeks 99.67% to an even more impressive 100%! They were joined this week by 3A who also achieved a perfect 100%. 1W were even more amazing and also achieved a perfect punctuality record alongside RW for the second week running. That's a fantastic record for 3A and RW!

### Parents' Prayer Club

It was great to see a few new faces at our last Parents' Prayer Club, and it would be lovely to see a few more at our next meeting which is on **Thursday 17th May**. Meet at the school office at 9.05. We aim to finish by 9.25am.

### Whole School Attendance and punctuality

The whole school attendance target is 96.5%. We were bang on target last week, at 96.53%.

From September 2017 to last week, attendance remains just short of that target at 96.24%, but it is creeping back up slowly. There have been 1459 late marks from the beginning of this academic year to date.

### Free On-Line Safety Workshop

Last chance to sign up ..... It's not too late! Muddled by Minecraft or rattled by Roblox? The **NSPCC and O2** are running an **hour-long interactive workshop with tips, tools and advice on how to keep your child safe online**.

Talking about online safety with your child doesn't need to be difficult – build your confidence to have those important conversations, get to know your child's online world and learn where to go for help and advice.

The workshop will take place at **3:45pm on Thursday 10<sup>th</sup> May**. Don't miss out on this great opportunity! Make sure you RSVP by responding to [school@st-marys-coe.waltham.sch.uk](mailto:school@st-marys-coe.waltham.sch.uk)

### Request for donations

Please could we ask that parents of children in Reception and KS1 send in a spare pair of pants, tights and/or socks and trousers to be kept in their child's PE bag in case of toilet accidents. Along the same lines, if your child has outgrown any tights and trousers or if you would like to donate any underwear, we would be very grateful.

### Summer Uniform Reminder

- School sweatshirt/cardigan as per winter uniform
- Grey Shorts/Culottes
- School style pink check/gingham dress
- Sensible Sandals with an ankle strap in black, white or pink (No flip flops)
- Any sensible cap or sun hat may be worn

### SHINE

SHINE continues at St Saviours for the Summer Term, as follows:

Saturday 12<sup>th</sup> May

Saturday 19<sup>th</sup> May

#### HALF TERM

Saturday 16<sup>th</sup> June

Saturday 23<sup>rd</sup> June

Saturday 30<sup>th</sup> June

Saturday 7<sup>th</sup> July

Saturday 14<sup>th</sup> July

Payment of £13.50 is now due please.

Achievement school for Year 6 has now finished for this school year.

### Useful Contacts

Address: Brooke Road,  
Walthamstow, E17 9HJ

Phone: 020 8521 1066

Website: [www.stmaryscofe.org](http://www.stmaryscofe.org)

Email: [school@st-marys-coe.waltham.sch.uk](mailto:school@st-marys-coe.waltham.sch.uk)

Teatime Club: 07542 193499

Nursery: [stmarysnursery.net](http://stmarysnursery.net)

Church:

[www.walthamstowchurch.org.uk](http://www.walthamstowchurch.org.uk)

### Key dates and times for the Spring Term 2018

Thursday 10 <sup>th</sup> May	<b>Class Assembly for 4W</b> <b>3.45 – Online Safety Workshop</b>
Friday 11 <sup>th</sup> May	<b>Year 4 Trip to National Gallery</b>
Monday 14 <sup>th</sup> -Thursday 17 <sup>th</sup> May	<b>Year 6 SATs Week</b>
Thursday 17 <sup>th</sup> May	<b>9.05 – Parents' Prayer Club</b> <b>Class Assembly for 5M (Note this is a change – was originally 5A)</b>
Friday 18 <sup>th</sup> May	<b>Year 3 Trip to British Museum</b>
Tuesday 22 <sup>nd</sup> May	<b>PFA AGM – 8pm – St Mary's Welcome Centre</b>
Thursday 24 <sup>th</sup> May	<b>Class Assembly for 5A (Note this is a change – was originally to take place on 17<sup>th</sup> May)</b>
Monday 28 <sup>th</sup> -May to Friday 1 <sup>st</sup> June	<b>HALF TERM BREAK – SCHOOL CLOSED</b>
Saturday 16 <sup>th</sup> June	<b>Summer Fair</b>
Friday 29 <sup>th</sup> and Saturday 30 <sup>th</sup> June	<b>PFA Camping Trip</b>
Saturday 14 <sup>th</sup> July	<b>PFA Family Bike Ride to Victoria Park</b>

## Term Dates 2018

### **Summer Term 2018 – First Half (30 Days)**

Start – Monday 16<sup>th</sup> April 2018

End – Friday 25<sup>th</sup> May 2018

**Half Term:** Monday 28<sup>th</sup> May 2018 – Friday 1<sup>st</sup> June 2018

Holidays May Day Bank Holiday: **Monday 7<sup>th</sup> May 2018**

Spring Bank Holiday: Monday 28<sup>th</sup> May 2018 (during Half Term)

### **Second Half Summer Term (35 Days)**

Start – Monday 4<sup>th</sup> June 2018

End – Friday 20<sup>th</sup> July 2018

This calendar gives a total of 195 days for the school year (190 pupil days plus 5 inset days).

### **Autumn Term 2018 First Half (32 Days)**

**INSET – Monday 3<sup>rd</sup> September, Tuesday 4<sup>th</sup> September 2018**

Start – Wednesday 5<sup>th</sup> September 2018

End – Thursday 18<sup>th</sup> October 2018

**INSET – Friday 19<sup>th</sup> October 2018**

**Half Term: Monday 22<sup>nd</sup> October 2018 - Friday 26<sup>th</sup> October 2018**

### **Second Half (39 Days)**

Start – Monday 29<sup>th</sup> October 2018

End – Thursday 20<sup>th</sup> December 2018

**Holidays: Friday 21<sup>st</sup> December 2018 to Friday 4<sup>th</sup> January 2018**