



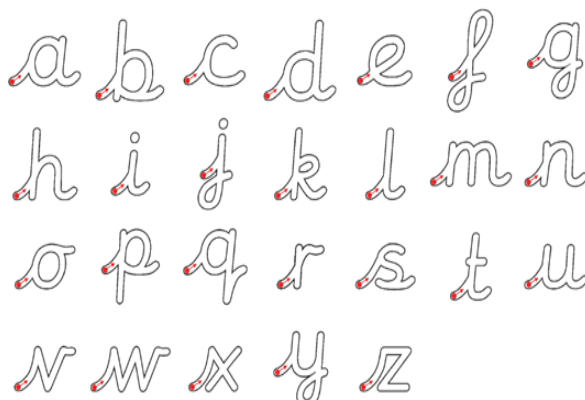
## Weekly Newsletter

24<sup>th</sup> September 2018



### Headteacher's News

The various **'Meet the Teacher'** meetings ended this week and I hope you found them useful. Many topics would have been discussed, including curriculum content; future trips; homework; PE kit requirements; and home reading expectations, amongst many other things. St Mary's **new handwriting style** would have been discussed in many cases; this new approach to letter formation involves each letter beginning with a 'lead-in' and ending with a 'lead-out' in what is known as a *fully cursive style*. Previously, under our old scheme, quite a few of the letters were not joined, but now all of them will be. Once the children have mastered the formation of each letter with lead-in and lead-out, they will begin to link them together, and because they have formed the letters in this way (with lead-ins and lead-outs), a joined script is more likely to become their default style because the way that the individual letters are formed lends itself so naturally to joining. The National Curriculum makes it clear that children should be able to form a fluent handwriting style and our focus on this requirement continues to be in-line with this statutory guidance.



Another topic that came up at more than one 'meet the teacher' meeting was the issue of **home reading**, and the issue of how much reading children should do on a daily basis. One thing I would like to add to this discussion is less about hearing children read, and more about reading *to* children. As children get older and more time is spent hearing them read at home, what can sometimes get lost in this transition is the high value time children spend listening to stories read by an adult. I would urge all parents to continue to read to their child well into the junior years so that their understanding of language and vocabulary expands, and so that they enhance their comprehension of narrative structures and of sub-text; this can often be best done when the subject matter of the text being read to the child is more challenging than would be the case in the child's home-reading book where the child needs to be able to independently de-code the text. Of course, the other reason that it is a good thing to enjoy stories together in this way is because it is fun! A child's love of books will come as much from *hearing* as from *reading* great texts, whether it is The Gruffalo, Harry Potter or Oliver Twist.

**Homework** was also a topic raised at the parent meetings; this sometimes thorny issue tends to divide opinion in schools, with some parents wanting more structured and more frequent tasks set, and others wanting much less formal homework set, perhaps with a greater emphasis put on home reading. Our homework approach is mainly online at the moment, though we keep this under review all the time and seek to engage with parents that would prefer a different approach; some good discussions have taken place with the Parent Council on this topic. We have

two homework clubs at the moment in the Thursday to Tuesday homework window and they currently both have spaces available, so do please make use of them if you are not able to access the homework online for any reason.

*Mr O'Brien - Headteacher*

### Toys and Games

Please could we ask that children do not bring personal toys and games into school from home. Children get distressed if they get misplaced and cannot be found, or if they get broken. We have plenty of play resources in school for children to use. Thank you.

### Break time Snacks and birthday treats

St Mary's is a healthy school and whilst we encourage children to bring a snack for break, it does need to be a piece of fruit and not crisps, cereal bars or chocolate/sweets of any kind. Free fruit is provided by school at playtime for children in Reception and Years 1 and 2.

Similarly, whilst we are all happy to share birthday treats, we would ask that you consider sending a healthier snack rather than sweets and cakes, on the occasion of your child's birthday. Thank you!

### Cycles in the playground

No bicycles should be left in the playground – only scooters should be left there please. We now have a large number of bicycle storage spaces at the front of the school in Brooke Road. If you are going to use them, remember to bring a strong chain and padlock, or even two chains for extra security. CCTV covers the bike storage area.

### Contact Information

May we remind parents that it is your responsibility to ensure we are kept up to date with any changes in your own personal details – home address, relevant phone numbers and e-mails etc. It is so important that we have correct details in case we need to contact you at any point.

### School Day Reminders

Chestnut Avenue North and South entrances are for Children from Years 1 to 6. The entrance in Brooke Road is for Reception children only. If you wish to speak to a member of the office staff, please do not walk through the school, but go round and enter through the main school entrance.

### Whole School Attendance and Punctuality

The whole school attendance target is 96.5%. Each week we will advise you of the percentage we achieved.

Last week, our first full week of attendance, we achieved 94.81% which is below our target figure. There were 44 late marks across the school.

### Attendance and Punctuality Winner

Well done to **Class 3W** who had the best attendance figures for last week, with 99.3%.

Punctuality is very important, not only for school, but in life generally. Children who are regularly late for school miss vital morning information and a late start often sets the tone for the day. We will also let you know each week the class achieving the best punctuality. Well done to **Reception Attlee** and **Reception Morris** who had everyone here on time every day, and also to **1Morris, 3 Attlee, 3 Wilson, 4 Attlee** and **5 Wilson** who all had perfect punctuality. Well done everyone. Keep it up!

### Assemblies

Parents are welcome to join us for our Monday and Friday assemblies – Friday is followed by a coffee morning. We will be splitting assemblies – **Morris and Wilson** will be in the gym (parents should enter via the playground) on Fridays and **Attlee** in the main school hall. Class assemblies are on a Thursday morning, running throughout the year. You are more than welcome to come along to those too. Dates will be published in our date's section.

### **Stars of the Week**

Our first Stars of this academic year were presented in assembly on Friday. Well done to the following:

Y1A- Ava	Y1M- Morolayo	Y1W- Keir
Y2A- Laura	Y2M- Mei	Y2W- Avis
Y3A- Angelo	Y3M- Sophia	Y3W- Tate
Y4A- Shalom	Y4M- Dante	Y4W- Beth
Y5A- Marc	Y5M- Jada-Marie	Y5W- Aaron
Y6A- Lewis	Y6M- Zara	Y6W- Karim

Our Reception children do not get included in Stars of the Week at this point in the school year as they do not join us for whole school assembly yet. They do deserve a special mention at this point though, for settling so beautifully into school life.

### **Finance Matters**

All payments to school must be made via ParentPay. Reception parents will be issued with an activation letter in due course.

Items such as trips, music lessons etc will be added as appropriate. Please note that breakfast and tea time clubs must be kept in credit at all times. We have a waiting list for both these clubs so failure to keep your account in credit may lead to your child being removed from the club and the space offered to another child.

Similarly, dinner money accounts should please be kept up to date. Failure to do so could mean you are asked to provide a packed lunch until your child's account is back in credit.

### **School Lunches**

Just a quick reminder, school meals are now £2.20 per day, which is £11.00 per week. For those parents who prefer to pay half termly, the cost of dinner money for this half term will be £72.60 - or for the full term, until Christmas, will be £158.40. Payment may be made on ParentPay at any time and accounts should be kept in credit at all times.

If your child has packed lunch, please remember that we are a healthy school and packed lunches should not include cakes, sweets, biscuits. No glass bottles or fizzy drinks either please. Thank you.

### **Diary Dates**

Dates for your diary will appear in the newsletter each week. Please keep an eye out for events relevant to you.

### **Class Corner**

**Year 3 Attlee** have had an amazing start to the new academic year. They have begun looking at ancient Greece and the Greek gods in topic lessons. They have also been building on their knowledge of place value in mathematics. They have been reading different Greek myths and re-writing them, using grammatical techniques such as expanded noun phrases and adverbials. Also, during reading, they have been picking out key information from the Greek mythical stories and summarising the text whilst predicting what might happen next. Lastly, they have been looking at the biblical creation story in R.E. Well done 3 Attlee on a great term thus far! Keep up all your hard work.

*Miss Safo and 3A*

### **Medical Needs**

May we remind you that if your child suffers from asthma, we need to have two asthma pumps in school at all times. Similarly, if your child has an epi-pen or any other medication that needs to be taken on a regular basis (not antibiotics), please could you send that medication into school as soon as possible, clearly marked with your child's name and any instructions. Please note that we are not able to administer any other medication such as antibiotics but you are welcome to come in to school to administer as necessary.

### **General Data Protection Act (GDPR)**

Please contact the DPO with any questions about the operation of this policy or the GDPR or if you have any concerns that this policy is not being or has not been followed.

The DPO's contact details are as follows: **Data Protection Officer:** Craig Stilwell, **Address:** Judicium Consulting Ltd, 72 Cannon Street, London, EC4N 6AE **Email:** [dataservices@judicium](mailto:dataservices@judicium)

*“At St Mary’s, we’ve started a new **Digital Leader Council** who will help support our school community with any technical or online safety issues. On Tuesday, the digital leader council started their training with a visit to The Apple Store in Westfield where we started block coding on some programming tasks; these were challenging games where we had to code a dragon’s journey to find gems using commands and ‘loops’.*

*Afterwards the staff showed us special robots shaped as balls (called Spheros) and we programmed them through a maze using the i-pads from before. Some of us raced them along a special track, programming their speed, direction and stopping point. It was great fun (as well as a big challenge!) and we really enjoyed solving the challenges as a team.”*

**Report by Najeh and Nina (5-Wilson)**

# Apple Field Trip



### Useful Contacts

Address: Brooke Road, Walthamstow, E17 9HJ  
 Phone: 020 8521 1066  
 Website: [www.stmaryscofe.org](http://www.stmaryscofe.org)  
 Email: [school@st-marys-coe.waltham.sch.uk](mailto:school@st-marys-coe.waltham.sch.uk)  
 Teatime Club: 07542 193499  
 Nursery: [stmarysnursery.net](http://stmarysnursery.net)  
 Church: [www.walthamstowchurch.org.uk](http://www.walthamstowchurch.org.uk)

Monday 24 <sup>th</sup> September- Friday 5 <sup>th</sup> October	<b>Y4 Morris 2 Week Swimming Sessions</b>
Monday 25 <sup>th</sup> September	<b>9am – Meet the Year Group Team – Year 1</b>
Friday 28 <sup>th</sup> September	<b>Year 1 Freshwater Toy from the Past Workshop</b>
	<b>Year 6 Morris Imperial War Museum Trip</b>
Saturday 29 <sup>th</sup> September	<b>SHINE to begin at St Saviours</b>
Friday 5 <sup>th</sup> October	<b>Year 3 Freshwater Greek Workshop</b>
	<b>Year 5 Attlee/ Morris William Morris Gallery</b>
	<b>Year 6 Wilson Imperial War Museum Trip</b>
Tuesday 9 <sup>th</sup> October	<b>9am – Year 6 Parents to Meet the Team (repeat meeting for those who were unable to attend previous meeting)</b>
Friday 12 <sup>th</sup> October	<b>Year 4 School Church Workshop</b>
	<b>Year 5 Wilson William Morris Gallery</b>
Monday 15 <sup>th</sup> October	<b>6pm – PROSPECTIVE RECEPTION PARENT VISITS</b>
Thursday 18 <sup>th</sup> October	<b>Last Day of School- School finishes at 3.30pm</b>
Friday 19 <sup>th</sup> October	<b>INSET DAY</b>
Monday 29 <sup>th</sup> October	<b>CHILDREN RETURN TO SCHOOL</b> <b>Y4 Wilson 2 Week Swimming Sessions</b>
Wednesday 7 <sup>th</sup> November	<b>Parent Consultation Evening – details to follow</b>
Thursday 8 <sup>th</sup> November	<b>Parent Consultation Evening – details to follow</b>
Saturday 17 <sup>th</sup> November	<b>9.30am – PROSPECTIVE RECEPTION PARENT VISITS</b>
Monday 10 <sup>th</sup> December	<b>10am – PROSPECTIVE RECEPTION PARENT VISITS</b>
Monday 7 <sup>th</sup> January 2019	<b>10am – PROSPECTIVE RECEPTION PARENT VISITS</b>

## **St Mary's Term Dates 2018-2019**

### **Autumn Term 2018**

#### **First Half (32 Days)**

INSET – Monday 3rd September, Tuesday 4th September 2018

Start – Wednesday 5th September 2018

End – Thursday 18th October 2018

INSET – Friday 19th October 2018

**Half Term: Monday 22nd October 2018 - Friday 26th October 2018**

#### **Second Half (39 Days)**

Start – Monday 29th October 2018

End – Thursday 20th December 2018

**Holidays: Friday 21st December 2018 to Friday 4th January 2018**

### **Spring Term 2019**

#### **First Half (29 Days)**

INSET – Monday 7th January 2019

Start – Tuesday 8th January 2019

End - Friday 15th February 2019

**Half Term: Monday 18th February 2019 – Friday 22nd February 2019**

#### **Second Half (30 Days)**

Start - Monday 25th February 2019

End – Friday 5th April 2019

**Holidays: Monday 8th April to Monday 22nd April 2019**

### **Summer Term 2019**

#### **First Half (23 Days)**

Start – Tuesday 23rd April 2019

End - Friday 24th May 2019

**Half Term: Monday 27th May 2019 - Friday 31st May 2019**

**Holidays May Day Bank Holiday: Monday 6th May 2019**

**Spring Bank Holiday: Monday 27th May 2019 (during Half Term)**

#### **Second Half (37 Days)**

Start - Monday 3rd June 2019

End – Tuesday 23rd July 2019