



ST. MARY'S C OF E PRIMARY SCHOOL NEWSLETTER

Dear Parents and Carers,

Despite the rainy weather, we have been all smiles in school this week.

There has been a real buzz around school as children and staff prepare for 'dress up like a teacher' day on Friday. It's sure to be a day full of laughter and fun! This event will raise funds for Young Minds, the charity chosen by the children of St Mary's. Donations can be made in cash or via the ParentPay item.

We are also very much looking forward to 'Spirituality Day' on Thursday. This is a special day we set aside to explore spirituality together. Earlier this week, we welcomed musicians from Forest School, whose performance provided a beautiful segue into our spirituality discussions. This year, our theme for Spirituality Day is Random Acts of Kindness.

Meanwhile, our passionate Eco Warriors have been working hard behind the scenes, coming up with thoughtful and practical ideas to help improve our school and protect the environment. As part of this work, they visited each class and added blank name labels to unlabelled jumpers and cardigans, making it easier for parents and pupils to write names on them. By clearly labelling clothing, we can return items to their owners more easily, keep our school tidy and reduce unnecessary waste.

This work reflects our shared responsibility to care for the world around us, as we are reminded in the Bible:

"The Lord God took the man and put him in the Garden of Eden to work it and take care of it."

Genesis 2:15

Thanks to your incredible support, our school achieved an outstanding 95.95% attendance this week, and we're so grateful to our parents for the daily effort you make to get children in, learning, and thriving.

Joe

Key Dates

February

- W/C 02.02.2026 - Spirituality Lessons
- Friday February 6th - Non uniform
- 'Dress like a teacher' day. Brought to you by School Council
- W/C 09.02.2026 - Online Safety Week
- **Half Term: Monday 16th February – Friday 20th February 2026**

March

- Thursday 5th - World Book day (non-uniform)
- Friday 20th - Cultural Day (non-uniform)
- Tuesday 24th March (Rec. - Y2) and Wednesday 25th Science Symposium (Y3-Y6)
- Thursday 26th Church Services

April

Easter Break: Monday 30th March 2026 to Friday 10th April 2026

May

Y6 SATS Week: Monday 11th May to Thursday 14th May

Half Term: Monday 25th May - Friday 29th May 2026

June

July

Last day of term: Friday 17th July 2026

Forest School Musicians



We would like to extend a special thank you to the young musicians from Forest School, who delighted and inspired us with a musical presentation. Their performance brought joy to the children and was a wonderful demonstration of creativity and confidence.



WINTER ART







JOIN OUR DUOLINGO CLASSROOM FOR FREE!

SIMPLY FOLLOW THIS LINK:
WWW.DUOLINGO.COM/CLASSROOM/ZNPDQH

ENTER THIS CODE WHEN PROMPTED: ZNPDQH

CHILDREN CAN EARN POINTS FOR THEIR CLASS BY
LOGGING ON AND COMPLETING A FRENCH
CHALLENGE!



duolingo

Courageous Advocacy



Spring Term

YR

The Reception children will continue to read and age appropriate books about advocacy and equality.

Equality

The children will be considering what is important to them and creating 'Dear World...' statements.



Y1

Respect

Year 1 will read some stories about being eco-friendly and create their own mini-books or story maps with eco messages.

Y2

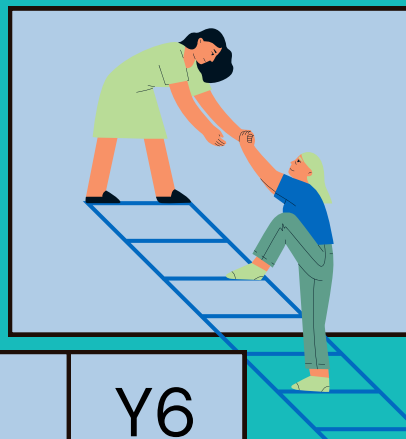
Caring

Year 2 will learn more about the throwaway culture of Fast Fashion through to the unethical pay and working conditions of ready-made garment workers. They will host a uniform swap event in the Spring.

Y3

Truth

This term, the children will be focussing their efforts on the 'Send my Friends to School' campaign. They will create craftivism puzzle pieces which will be sent to those in charge of our country.



Y4

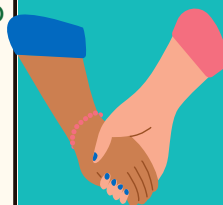
Wisdom

In Year 4, students will collaborate in groups on an engaging oracy project, preparing and delivering their own TED Talks on topics that resonate with them. Leveraging technology and their communication skills, they aim to share their messages with a wide audience. This term, they will focus on researching and developing their chosen topics.

Caring

Y6

The Year 6 pupils will be delving into the United Nations 17 Goals for sustainable development. They will focus in on the goal to end poverty learning about poverty, exploring biases linked to poverty and develop thier own thinking into a Ted Talk outline.



Y5

Wisdom

Year 5 will be learning about the United Nations Goals for sustainable development focussing in on the goal of zero hunger. They will present their learning and ideas for the future.



SPRING
TERM

YR

CREATIVITY

Mindful Movement Class

Y1

CREATIVITY

Cards for our unsung Heroes

Y2

CREATIVITY

Litter Picking

Y3

CREATIVITY

Bollywood Dancing

Y4

CREATIVITY

STEM workshop

Y5

CREATIVITY

West End musical workshop

Y6

CREATIVITY

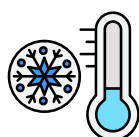
3D printing gifts

Important Messages



Medication

If your child has medication in school, please ensure that you have noted down the expiry dates to ensure we have the correct medication in school. If your child's doctor has made any changes to their medication or the procedure for caring for your child, please ensure the office is informed in writing of any changes and receives a copy of the documents from the GP.



Cold Weather

As the cold weather seems to be sticking with us, we ask that all children have warm coats, hats, gloves and scarves with them.



Healthy Snacks

We would like to remind parents and carers that St Mary's is a Healthy School. Children should not bring chocolate bars, crisps or fizzy drinks as morning snacks, if your child does bring these in, they will be replaced with a piece of fruit and sent home with them at the end of the school day. Please ensure that should you like to provide your child with a snack that it is a healthy option. Nut free cereal bars, yoghurt bars or fruit bars are recommended.

All children are encouraged to drink water regularly – please ensure that your child is bringing in their own water bottles, these can be refilled during the school day.

We are proud to be a nut free school!



Food Bank



Our food bank stock is running low. We are welcoming donations of reusable bags, tinned goods and non perishable items. If you have any you could donate, it would be very much appreciated!

The food bank is open for any families struggling with the cost of living crisis. You are welcome to come into the office at any time to collect items that you may need.

Community Notices

WALTHAMSTOW WELCOMES

COMMUNITY DROP-IN & PAPERWORK SUPPORT CAFE

No appointment necessary, just drop-in.

Alternatively, to book a timed appointment email:

E17welcomecafe@stmaryswalthamstow.org

<https://www.facebook.com/profile.php?id=61575129088296>



ST MARY'S WELCOME CENTRE

8 CHURCH END, E17 9RJ | 10:00—12:00

OPEN EVERY Wednesday (except 24/12/25 and 31/12/25) AND



Saturday: 06/12 | 20/12 | 03/01 | 17/01 | 31/01 | 14/02 |

28/02 | 14/03 | 28/03 | 11/04



Interested in volunteering with us? Email "Volunteering Opportunities" to: welcomecafe_admin@stmaryswalthamstow.org

Attendance



Our whole school attendance for Week 3 was 96.78%.

Our whole school attendance for Week 4 was 95.95%.

Well done St Mary's!

Our whole school attendance for this academic year is: 96.87%

Late Arrivals

We are having a rise in the number of late arrivals, this does affect your child's attendance percentage. Please ensure that your child arrives at the gate by 8:55am. If you do not arrive on time, please bring your child to the office to be signed in to school.

Asbence Messages

If your child is going to be absent due to illness, please leave a message for the office team on the school absence line by calling 020 8521 1066 and dialling 1.

Please ensure this message includes your child's name and the reason your child is off sick - i.e. sore throat, temperature or stomach bug.

If you need to collect your child for a medical appointment during the day or they are late to school due to a medical appointment, you will need to provide the school office with an appointment letter/record.

Term Dates

Autumn Term 2025 First Half (37 Days)

INSET – Mon 1st, Tues 2nd and Wed 3rd September 2025

Start – Thursday 4th September 2025

End – Friday 24th October 2025

Half Term: Monday 27th October -31st October 2025

Second Half (34 Days)

Start – Monday 3rd November 2025

End – Thursday 18th December 2025

Holidays: Friday 19th December to Friday 2nd January 2026

Spring Term 2026 First Half (30 Days)

Start – Monday 5th January 2026

End – Friday 13th February 2026

Half Term: Monday 16th – Friday 20th February 2026

Second Half (25 Days)

Start – Monday 23rd February 2026

End – Friday 27th March 2026

Holidays: Monday 30th March 2026 to Friday 10th April 2026

Summer Term 2026 First Half (29 Days)

Start – Monday 13th April 2026

End – Friday 22nd May 2026

Half Term: Monday 25th May 2026 – Friday 29th May 2026

May Day Bank Holiday: Monday 4th May 2026

Spring Bank Holiday: Monday 25th May (during Half Term)

Second Half (35 Days)

Start – Monday 1st June 2026

End – Friday 17th July 2026

St. Mary's Christian Vision

I AM THE VINE AND YOU
ARE THE BRANCHES. IF
YOU REMAIN WITH ME AND
I WITH YOU, THEN YOU
WILL BEAR MUCH FRUIT.
LOVE ONE ANOTHER AS I
HAVE LOVED YOU.
(JOHN 15).