

# ST. MARY'S C OF E PRIMARY SCHOOL NEWSLETTER

*I am the vine and you are the branches.  
If you remain with me and I with you, then you will bear much fruit.  
Love one another as I have loved you.*  
John 15

Dear Parents and Carers,

Though it is slowly beginning to feel like Spring, it is hard to believe it is already Easter. The Spring term has flown by in a whirlwind of excitement. There was our Ash Wednesday service at St. Mary's, World Book Day, a fundraising event for Eat or Heat, a uniform and costume swap and a number of school trips in between. I would like to thank all of the adults at St. Mary's for making this such an exciting half-term for the children.

The last two weeks of term have also been hugely exciting. The science fair was a great success. The ingenuity and inventiveness of our children always amazes – but never surprises – me. The range of experiments on show was incredible. I had the pleasure of speaking with some of the children about them and the breadth and depth of their understanding was impressive. This event, of course, would not be the same without the contributions made by parents and carers alike. I am sure many of you spent weekends toiling with your children to perfect their experiment – thank you for your hard work, commitment and support. I would also like to thank Miss Jackson, our Science lead, for her work in making the event such a special one.

In this newsletter, I would also like to take the opportunity to thank Ms Chowdhury for her hard work at St. Mary's over a number of years. Ms Chowdhury will leave St. Mary's at the end of April to relocate outside of London. I am sure you will welcome me in thanking her for all she has done at St. Mary's. As some of you will know, in the summer term, Mr Van Wyk will become St. Mary's SEND specialist. Mr Van Wyk will work closely with, Miss Lawrence, who will also oversee SEND at St. Mary's.

It was a great joy to come together as a school community on Monday of this week for an Easter service at St. Mary's. Jacintha led the service beautifully and was ably assisted by the Worship Council who did a splendid job speaking in front of their peers, and parents and carers. Undaunted too, was the choir; they did a terrific job of singing for everyone. The occasion was made all the more special as it was an opportunity to celebrate the stars of the term.

We have encouraged the children to take part in a special No Place Like Home – Art and Poetry Competition - this Easter. We have asked the children to reflect on what life is like for the 43.3 million children around the world who are displaced. St. Mary's children are invited to create either a piece of artwork or a poem illustrating their empathy with, or experience of, being separated from the place they call home. The entries will be judged by a panel of refugees, celebrities and journalists. The top 30 entries will go on display at the British Library during National Refugee Week. You can read more about this competition later in the newsletter.

I would like to close this newsletter by wishing you all a restful Easter break and with this quote from John 11:25,

"Jesus said to her, "I am the resurrection and the life. Whoever believes in me, though he die, yet shall he live"

Kind Regards  
Mr Pitchford  
Headteacher

# Attendance



**Our whole school attendance for Week 5 was 96.60%.**

**Our whole school attendance for Week 6 was 94.33%.**

Well done St Mary's!

Our whole school attendance for this academic year is: 96.25 %

## **Gentle Reminder:**

If your child is going to be absent due to illness, please leave a message for the office team on the school absence line by calling 020 8521 1066 and dialling 1.

*Please ensure this message includes the reason your child is off sick - i.e. sore throat, temperature or stomach bug.*

**If you need to collect your child for a medical appointment during the day or they are late to school due to a medical appointment, you will need to provide the school office with an appointment letter/record.**

Our Celebration Assembly takes places every Friday at 10am. All parents are welcome to join. For Attlee House, please enter via the main office on Brooke Road and for Morris & Wilson House, please enter via Chestnut Avenue South.

# Collective Worship

This week in collective worship our theme was following instructions. We looked at the Bible verse, “The Lord says, ‘I will instruct you and I will show you where to go. I will guide you and watch over you.’” Psalm 32:8. We discussed what instructions were and why it is important to follow instructions. We learnt that the reason we are given instructions is often to benefit ourselves and that it’s important to listen carefully to instructions and carry them out. That way you’ll keep yourself safe, and others too.

Then we looked at how to follow instructions well: When you hear instructions, concentrate on what is being said. When you concentrate your brain is better at sorting out information. To help you concentrate, stop doing other things and focus on what is being said. When you do this, your brain can store the information you have heard. If instructions are given by a person, you should try and look at the person as they speak to you. This lets the person know that you are concentrating. During class collective worship this week, we wrote instructions for how to be an active student in lessons or how to show good behaviour for learning. What did you write in your instructions? Have you been following your own instructions?

**Why should we follow the instructions we are given from our teachers, parents, carers and adults? How can we follow instructions well?**





BritishRedCross

**St Mary's supports  
the  
British Red Cross's  
humanitarian work.**

**Donate here:**

**<https://www.redcross.org.uk/>**





# St Mary's Young Transformers



**As part of our Young Transformers vision, we want our pupils to be confident, independent learners with enquiring minds and a life-long love of learning which happens in school and out.**

**We welcome children to bring in certificates that have been achieved outside of school. For example, achieving a piano grade, a swimming stage certificate or drama distinction. These will be celebrated during one of our weekly assemblies.**

# Easter Cycling School



TFL  
TRAVEL  
FOR LIFE

## FREE Easter Cycling School

**Location:**  
**Memorial Park**

**Location:**  
**Leyton Jubilee Park**

**Don't forget to  
share your  
Travel for Life  
evidence with  
us!**

**schooltravelplans  
@walthamforest.g  
ov.uk**



**Dates:**  
**Tuesday 2 April**  
**Wednesday 3 April**  
**Thursday 4 April**  
**Friday 5 April**

**Dates:**  
**Monday 8 April**  
**Tuesday 9 April**  
**Wednesday 10 April**  
**Thursday 11 April**  
**Friday 12 April**

**Sessions:**  
**9am to 11am - Learn to ride**  
**11am to 1pm - Learn to ride**  
**1:45pm to 3:45pm - Level 1 (off  
road)**

**Sessions:**  
**9am to 11am - Learn to ride**  
**11am to 1pm - Learn to ride**  
**1:30pm to 3:30pm - Level 1 (off road)**

**Book ahead: <https://www.cycleconfident.com/sponsors/waltham-forest/>**

**cycling@walthamforest.gov.uk.**

## School Book Fair

**THURSDAY  
25TH APRIL -  
TUESDAY 30TH  
APRIL**

**LOCATED  
IN THE  
GYM**

**SCHOLASTIC TRAVELLING BOOKS**

**COME To the SUPER AMAZING BOOK FAIR!**

**FREE BOOKS FOR YOUR SCHOOL WHEN YOU BUY AT THE BOOK FAIR!**

**A POP-UP BOOK-STORE WITH HUNDREDS OF BOOKS FROM JUST £2.99**

**LAST YEAR, YOUR SUPPORT HELPED TO DONATE OVER £5.3M BOOKS TO SCHOOLS NATIONWIDE**

**NEW CAT KID COMIC CLUB Save £3**

**NEW George Webster Why Not? £7.99**

**NEW Diary of a Wimpy Kid DIVER OVERLODE £7.99**

**NEW LUNA WOLF CODE DANGER ALESHA DIXON £7.99**

**NEW NINA PEANUT AMAZING £8.99 £7.99**

**NEW THE PANDAS WHO PROMISED £7.99**



**Do you, or your child,  
play an instrument at  
a level 3 or higher?  
Would you be willing  
and able to play as we  
enter into collective  
worship assemblies? If  
so, please get in touch  
so that we can make  
arrangements for your  
musical skills to inspire  
and entertain our  
school community.**





# SAVE THE DATE



## FRIENDS OF ST MARY'S SCHOOL



## SUMMER FAIR



## SATURDAY 22 JUNE



**FUN, GAMES,  
ARTS + CRAFTS,  
FOOD AND  
ACTIVITIES FOR  
ALL THE FAMILY**



**IF YOU ANY IDEAS FOR STALLS +ACTIVITIES, OR  
WOULD LIKE TO HELP RUN A STALL, PLEASE GET  
IN TOUCH! [STMARYSPFA2023@GMAIL.COM](mailto:STMARYSPFA2023@GMAIL.COM)**

# St Mary's Young Transformers



**Young  
Transformers**  
*MAKERS OF CHANGE*

**SPRING  
TERM**

**YR**

**CREATIVE**

**Mindful Movement Class**

**Y1**

**CARING**

**Cards for our unsung Hero's**

**Y2**

**CREATIVE**

**Bollywood Dancing**

**Y3**

**CARING**

**Charity project**

**Y4**

**CREATIVE**

**Making suncatchers for elderly**

**Y5**

**CONFIDENCE**

**West End musical workshop**

**Y6**

**CARING**

**3D printing gifts**



# St Mary's Courageous Advocacy

## Courageous Advocacy



### Spring Term

YR

During the Spring term, the Reception children will continue to enjoy the 'Equality curriculum.'

Equality

The children will be considering what is important to them and creating 'Dear World...' statements.



Y1

Respect

Year 1 children will build upon their previous craftivism project. Having sent the letter and project to the local MP they will focus their efforts on a TfL campaign.

Y2

Caring

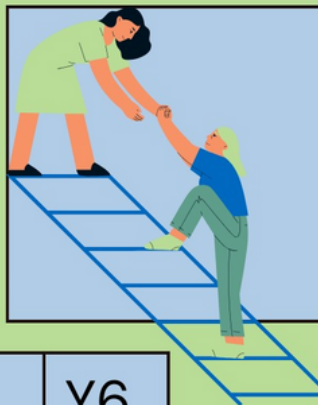
Having advocated about the throwaway culture of fast fashion through to the unethical pay and working conditions of ready-made garment workers. The Year 2 children will be writing to CEOs about their concerns and continuing their clothing drive.



Y3

Truth

Following a moving speech from a Y3 child, on 'Why going to school is a Privilege,' the children would like to do more. This term, they are focussing their efforts on the 'Send my Friends to School' campaign.



Y4

Respect

Year 4 will create lesson plans based on their courageous advocacy work for schools around the world to use. The plans will be shared and uploaded onto TES website so they can be accessed around the world.

Caring

Y6

Following the Year 6 teacher visit to a Kenyan School, the St.Mary's children want to learn from the Kenyan children. They are learning how to create less waste and how to live with a smaller carbon footprint. They hope to create viral content by comparing our lifestyles.



Y5

Wisdom

The Year 5 children continue to show an interest in food waste, hunger and food production's carbon footprint. They will advocate for grocers to sell in smaller quantities so there is less household waste.



# GET LISTENING

GENESIS PODCAST



First Episode

1:29



Listen Now!



GENESIS  
EDUCATION TRUST

**Follow the link below:**

<https://open.spotify.com/show/3n1bmtjruGx46tSAenDCdR>

# NO PLACE LIKE HOME – ART AND POETRY COMPETITION

This Easter, reflect on what life is like for the 43.3 million children around the world who are displaced. St. Mary's students are invited to create either a piece of artwork or a piece of poetry illustrating their empathy with or experience of being separated from the place they call home. These creations will be judged by a fantastic panel of celebrities, refugees, and journalists with the top 30 entries going on display in The British Library during National Refugee Week!



**Young  
Transformers**  
*MAKERS OF CHANGE*



- Artwork should be produced on A4-sized paper, in landscape format, as two-dimensional submissions, in any appropriate media.
- Poetry should be no longer than 14 lines.

**Deadline 1st May** - submissions given to Mrs Rowlatt

## **Learn more here!**



# St. Mary's Christian Vision

I AM THE VINE AND YOU  
ARE THE BRANCHES. IF  
YOU REMAIN WITH ME AND  
I WITH YOU, THEN YOU  
WILL BEAR MUCH FRUIT.  
LOVE ONE ANOTHER AS I  
HAVE LOVED YOU.  
(JOHN 15).



# ST MARY'S TERM DATES 2023-24

## **Autumn Term 2023**

### **First Half (33 Days)**

INSET – Wednesday 6th, Thursday 7th & Friday 8th September 2023

Start – Monday 11th September 2023

End – Friday 20th October 2023

Half Term: Monday 23rd October 2023- Friday 27th October 2023

### **Second Half (38 Days)**

Start – Monday 30th October 2023

End – Wednesday 20th December 2023

Holidays: Thursday 21st December 2023 to Friday 5th January 2024

## **Spring Term 2024**

### **First Half (25 Days)**

INSET – Monday 8th January 2024

Start – Tuesday 9th January 2024

End - Friday 9th February 2024

Half Term: Monday 12th February 2024 – Friday 16th February 2024

### **Second Half (29 Days)**

Start - Monday 19th February 2024

End – Thursday 28th March 2024

Holidays: Friday 29th March to Friday 12th April 2024

## **Summer Term 2024**

### **First Half (29 Days)**

Start – Monday 15th April 2024

End - Friday 24th May 2024

Half Term: Monday 27th May 2024 - Friday 31st May 2024

Holidays May Day Bank Holiday: Monday 6th May 2024

Spring Bank Holiday: Monday 27th May 2024 (during Half Term)

### **Second Half (40 Days)**

Start - Monday 3rd June 2024

End – Friday 26th July 2024